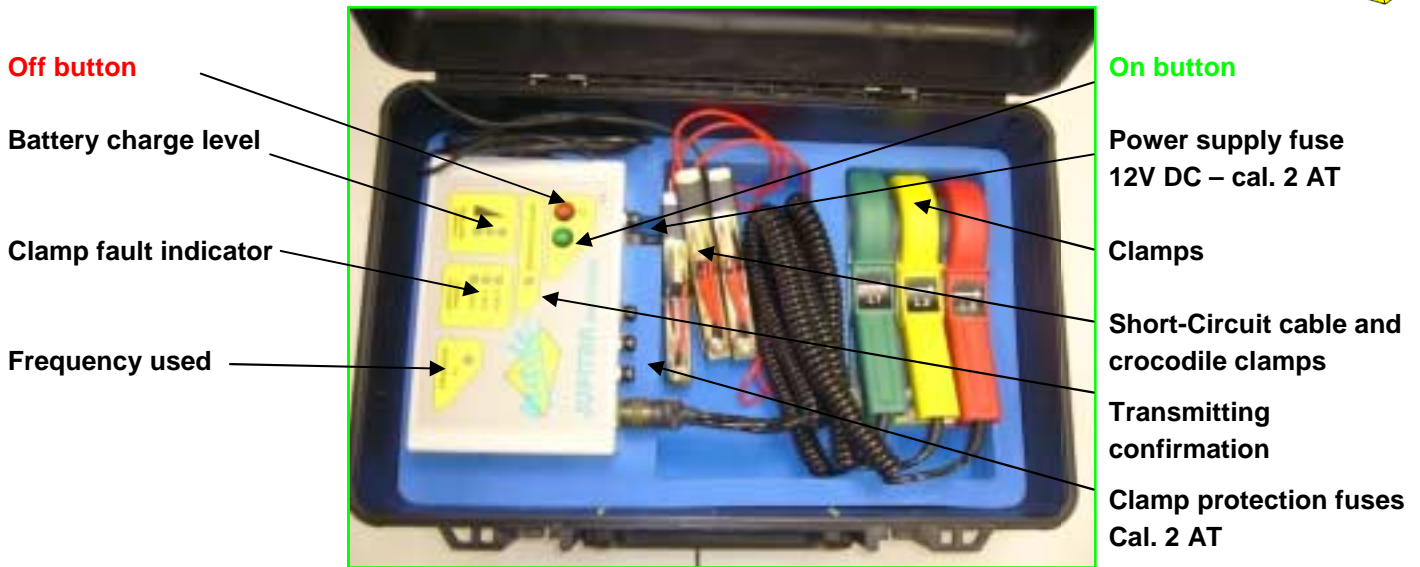
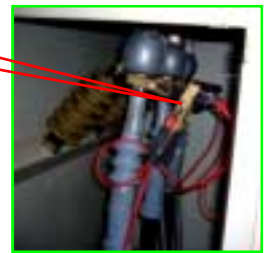
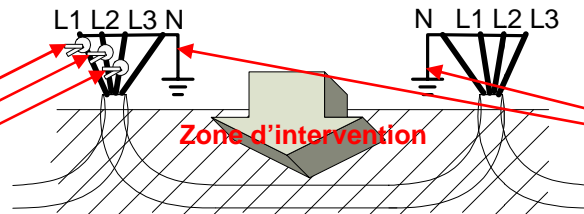


TRANSMITTER JUPITER



JUPITER Transmitter connection



Signal injection and measurement readings must be carried out at the closest possible point to the point of interest.

The cable cores must be short-circuited.

After switching on, check that there are no faults on the clamps, and that the battery charge level is good.

Precautions for the installation of the JUPITER Transmitter

CLAMPS MUST BE IN THE SAME ORIENTATION ON EACH CABLE (ACCORDING TO THE ARROW ON EACH CLAMP).

Use the directional arrow on each clamp to be 100% sure that they are connected in the correct sense.



PLEASE CHECK THAT CLAMPS ARE PLACED AROUND THE CABLE WHERE THERE IS NO SCREEN. IF NECESSARY, USE WOODEN CLAMPS OR TAPE TO SUPPORT THEM.

TO AVOID MISTAKES IN CABLE DESIGNATION, USE ONLY ONE JUPITER TRANSMITTER AT ANY WORK SITE.

© No part of this work may be reproduced and distributed without MADE prior written

In order to improve their products, MADE reserves the right to modify the products described in the documentation, at any time and without prior notice.

December 2007
MADE - V 1.10



MADE

S.A. au capital de 270 130 €
167, Impasse de la garrigue
F 83210 LA FARLEDE

Tél. : +33 (0) 494 083 198 - Fax : +33 (0) 494 082 879
E-mail : contact@made-sa.com - Web : www.made-sa.com

