



# TC-HT Sensors tester HV

**POWER**

**LINE  
DETECTOR**

*Test the sensors of the DETECT LINE,  
SKY RADIO, SKY NACELLE, ...*



**NETWORK EXPERTISE**



**COMPLETE RANGE OF  
PRODUCTS AND NEWS ON  
[www.made-sa.com](http://www.made-sa.com)**

**MADE S.A.**

167, Impasse de la Garrigue · 83210 La Farlède  
**Tél. : +33 (0) 494 083 198 · Fax : +33 (0) 494 082 879**  
**[contact@made-sa.com](mailto:contact@made-sa.com)**

In order to improve their equipments, MADE is reserving its rights to modify the products described in that documentation, at any time and without prior notification.© No part of this work may be reproduced and distributed without MADEs prior written permission.



## ● TC-HT Sensors tester HV

### *Test the sensors of the DETECT LINE, SKY RADIO, SKY NACELLE, ...*

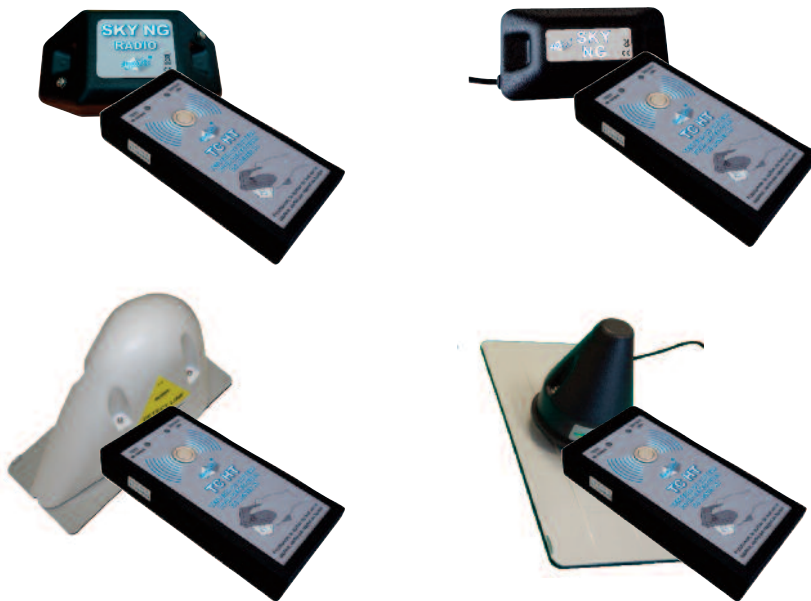
TC-HT is an instrument allowing to test any kind of sensor of our range of products DETECTION OF HIGH VOLTAGE AERIAL LINES : DETECT LINE, SKY RADIO, SKY NACELLE, ...

Easy to use, it will allow you to test the good operation of your systems and to avoid using an extension cord !

#### ➔ OPERATION

In order to test the complete system of DETECTION OF HV AERIAL LINES settled on your vehicle (operation of the sensor and transmission of information to the central unit), the TC-HT generates an electric field simulating the presence of an electric line.

You just have to center the box TC-HT on the sensor and to push the button in front of the product. If the system of DETECTION OF HV LINES generates an alarm, it means it is operational.



#### ➔ TECHNICAL CHARACTERISTICS

- ✓ Dimensions : 195 x 101 x 44 mm (tester) and 230 x 220 x 80 mm (suitcase)
- ✓ Works with 2 batteries of 9 V

