

INSTALLATION SHEET

DETECT LINE C

***Attention: Document to be filled in each installation.
If the system is installed by you, please return it to us.
Otherwise the guarantee can not be taken into account.***



TOUS NOS PRODUITS
ET NOS ACTUALITÉS SUR
www.made-sa.com

MADE S.A.

167, Impasse de la garrigue . 83210 La Farlède

Tél. : +33 (0) 494 083 198 . Fax : +33 (0) 494 082 879

contact.made-sa.com

MADE IN
FRANCE





General informations

Company Name:

Installation date:

Installer name:

Type d'installation

Installation support:

Vehicle registration:

Vehicle Features:

Matériels

UC :

DETECTLINE Compact serial number:..... Software version:.....

DETECT LINE C is composed of a central unit, coupled to a single sensor placed on the roof of the vehicle, for the detection of the electric field.

The two modules, central unit and single sensor are connected by a 3-conductor connection cable.

The central unit is powered by 12-24V.

The central unit housing is installed on the dashboard. It is used to signal and acknowledge the alarm.

DETECT LINE C is a DRIVING HELP that detects the proximity of a power line HTA and HTB under voltage in free area.

DETECT LINE C equips the trucks and forms a detection bubble around it from 10 m to more than 52 m depending on the model.

It warns the user by an audible signal and a warning light when the machine enters in area of detection of the electric field.

Commissioning

The system connects to the 24V after contact and the alarm is made either directly or by detection of PTO engagement (or other means).

Commissioning is automatic, no adjustment is necessary for the user.

When the power is turned on, the DETECT LINE C performs an automatic check. It emits a beep sound and activates all its LEDs.

In the event of alert, it informs the driver by a buzzer and visual alarm (hazard warning).

Operation

When the power is turned on, the DETECT LINE C beeps 2 times and then polls its sensor.

At startup all visual and audible alarms are activated twice.

-When the green LED blinks slowly, the DETECT LINE C is waiting for the "Activate Alarms" command

-When the green LED is lit steady, the DETECT LINE C is close to activated its alarms on detection of electric field.

If the ambient electric field exceeds the set threshold:

- ☒ The DETECT LINE C activates its "Buzzer".
- ☒ The DETECT LINE C operates its "Visual Alarm" (red LED).

The DETECT LINE C actuates the relay "Switching off the movement" dry contact (CRT) which can be coupled to a motion blocking command (Temporary blocking until the Acknowledge button is pressed).

☒ The user must activate the "Acknowledge" button in order to unblock the movement (Relay) and switch the system to "carry mode".

This ensures that the presence of the line is well known to the user.

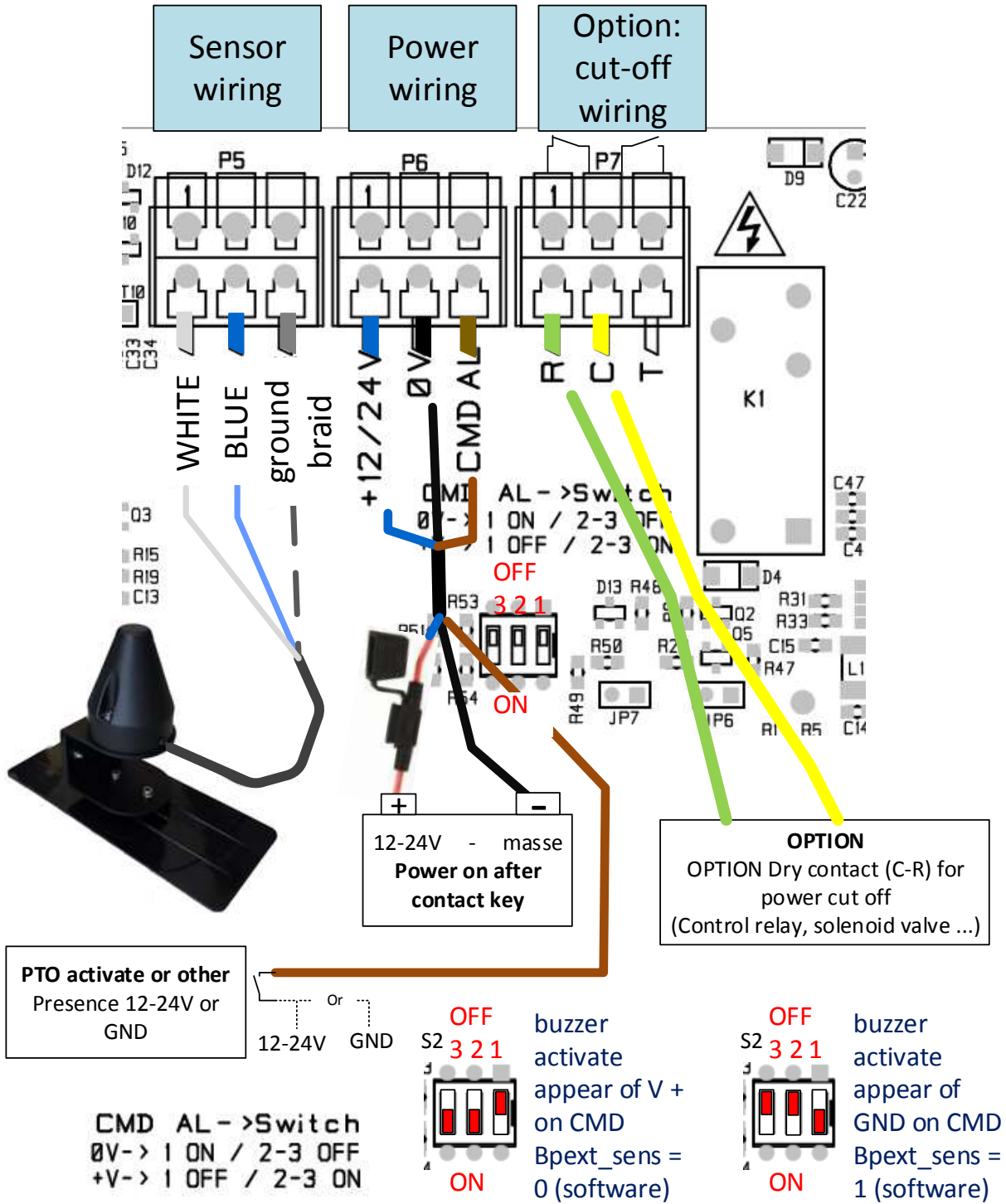
After this phase, if the ambient electric field is still present the system switches to the carry mode.

Central unit wiring

Power wiring permanent

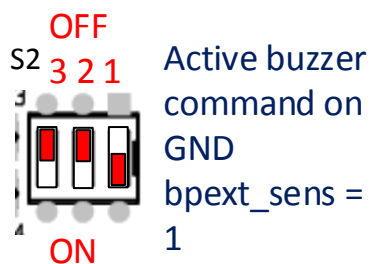
In this type of connection, the central unit is powered after the ignition key and the activation of the alarm occurs when the user performs a maneuver (for example: PTO (Power Take Off)).

This mode triggers an alarm immediately

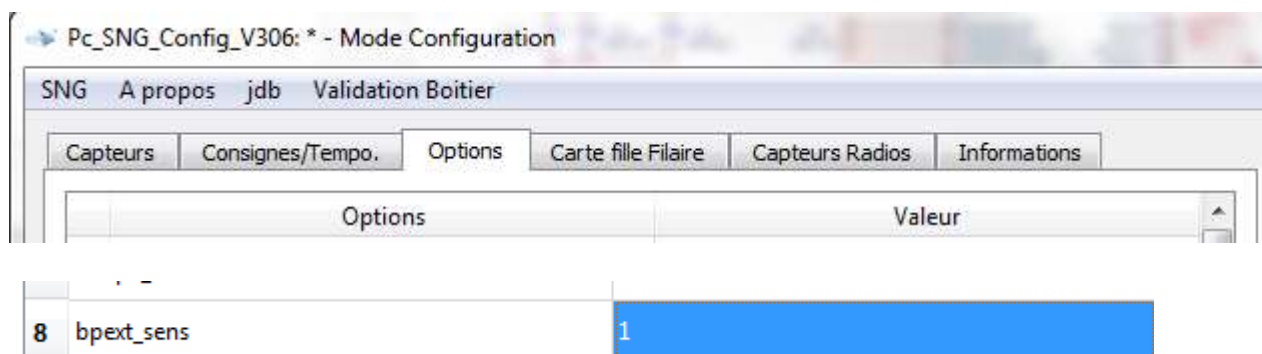


To activate the alarm monitoring mode, the control input must therefore be activated at ground potential (GND) or V + (12-24V). To do this, you must also configure the BPEXT_SENS option in the central unit (using the "Pc_SNG_Config_Vxxx" software)

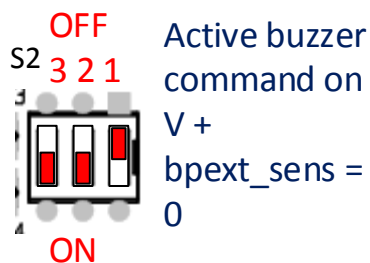
Version : Signal Power take-off to ground



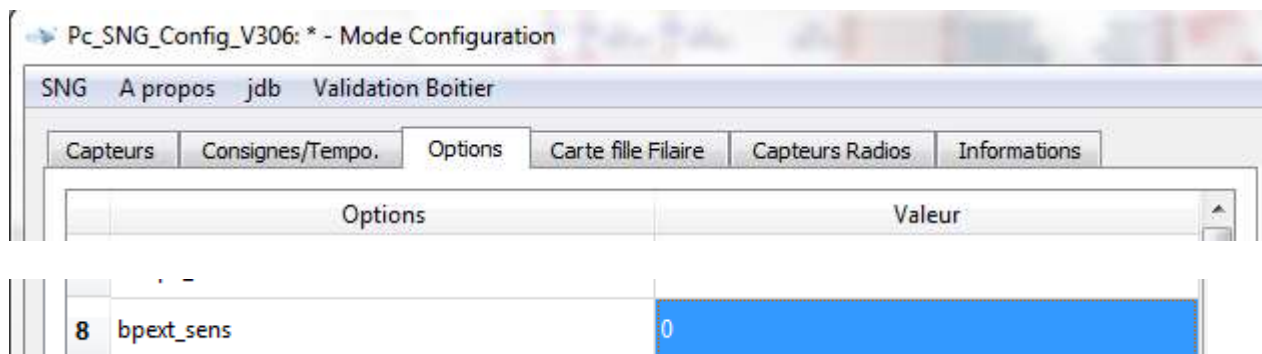
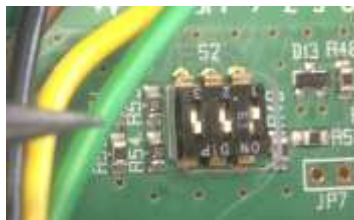
2 actions for configuration are to be performed:
Position the switches on the CPU board
Configure the option with the software



Version : Power take-off to 12-24V



2 actions for configuration are to be performed:
Position the switches on the CPU board
Configure the option with the software



Tests

✓ **Sensor test**

- Use the *Testeur TC HT*.
- If not, « approach a 230V cable on the sensor.



Testeur TC HT

✓ **Test of the cabin box**

✓ **Test of the external housing**

MADE-SA :

Installation by	
Name	
Signature	

Customer :

	Supply of the simplified form and user's guide	Basic training with explanation of the system	CRAM type training ***
Name			
Signature			

*** See enclosure sheet

Observations :

.....

.....

.....

Technical visits

Date	<i>Defects found</i>



Work	Name / Signature / Stamp

Technical visits

Date	<i>Defects found</i>



Work	Name / Signature / Stamp

Reminder on lines electrical

HIGH LIFT EQUIPMENT OPERATIONAL AID Detection of overhead power lines from 20000 volts ~

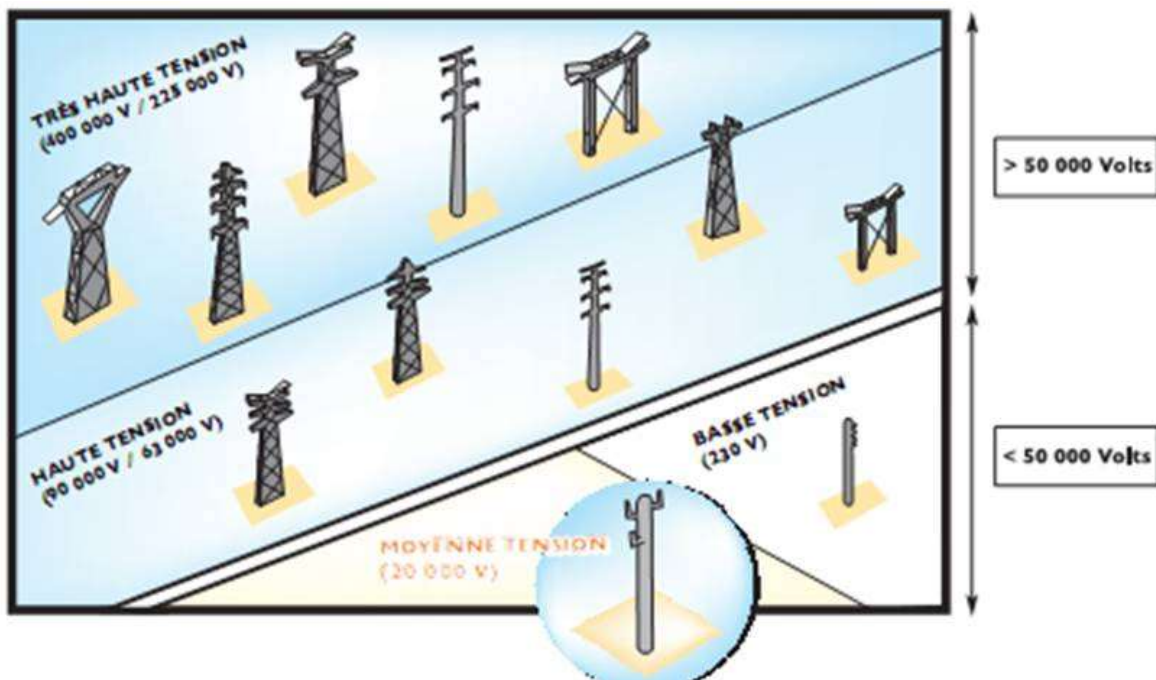
REMARK : Given that the detection threshold of the electric field is 4 meters at 20 KV, for low voltage lines of 380 V, the device reacts at a distance of less than 10cm.
Thus the device will not warn of direct current lines.

Warning :

The system is inoperative on:

- Overhead power lines Low Voltage (380V)
- Overhead power lines Medium Voltage Direct Current (trams power, railways in general ..)

The VIGILANCE and the operator must remain CAUTION maximum to approach energized electrical lines.

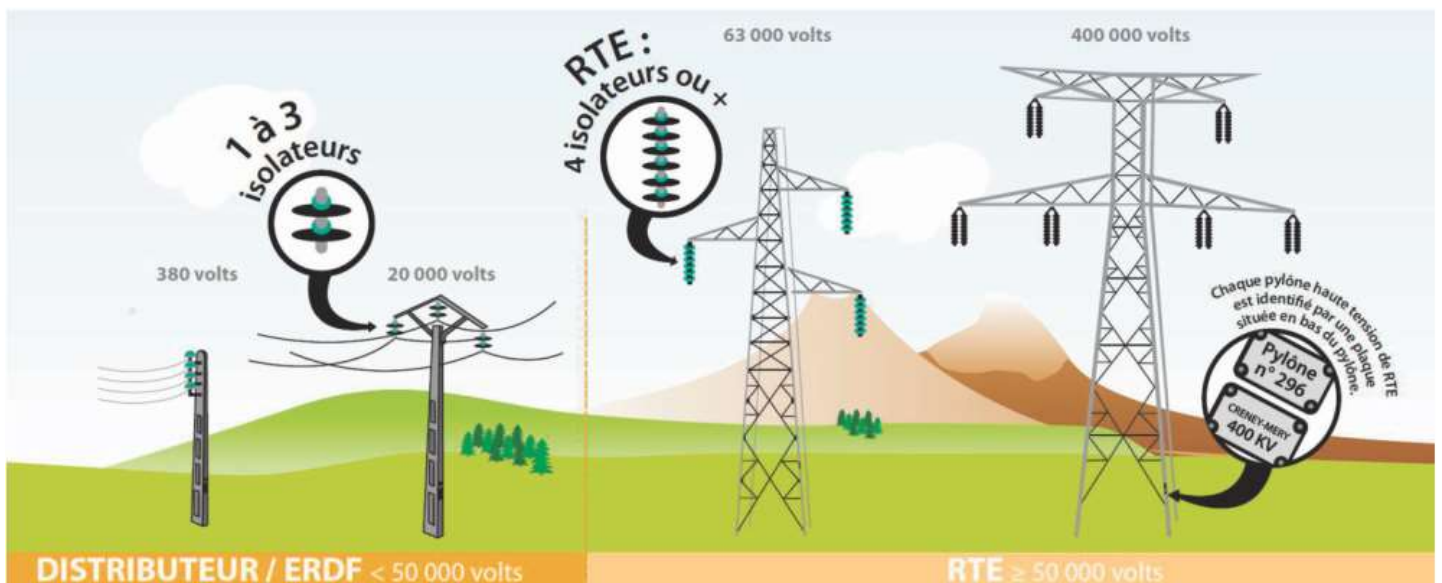


Reminder on the High Voltage Lines!

Electrocution can occur even without touching the line!

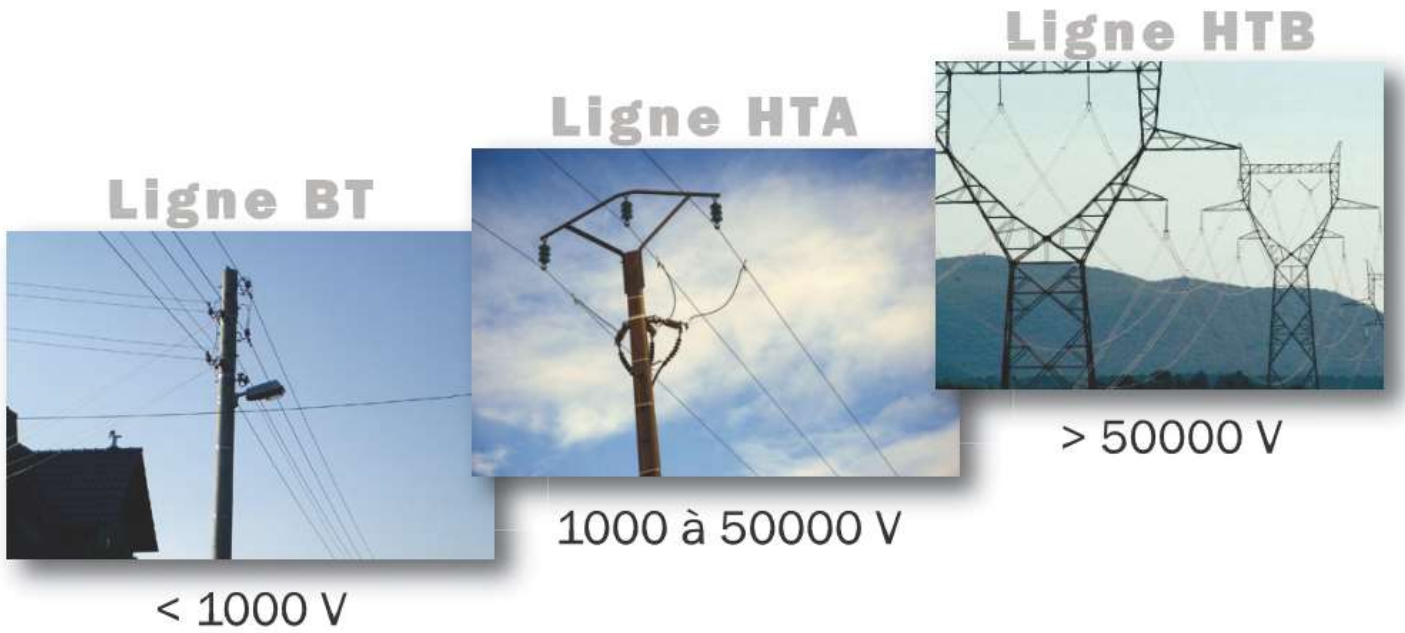


Comment reconnaître les lignes électriques aériennes ?



Reminder on the High Voltage Lines!

The different lines



Safety distances

Up to 50000 volts: 3 m



50000 volts and more: 5 m

