

**MADE • network expertise**

POWER LINE DETECTOR

POWER LINE DETECTOR

# POWER LINE DETECTOR



**made**

# MADE

## MADE SA

167, impasse de la Garrigue  
83210 La Farlède

**Tél. + 33 (0) 494 083 198**

**[contact@made-sa.com](mailto:contact@made-sa.com)**



## Field of activity

Electricity distribution maintenance  
Underground network locators  
Specific telecom equipment  
Power line detectors  
Personal Protective Equipment  
Defence

## Manufacturing and sales

## Engineering office

## Long-time partners

Enedis,  
GRDF, DGA,  
Naval Group, etc.

# MADE



# Power line detector

Overhead lines detection

► p. 2

Detector with wire sensors **DETECT LINE NG, SKY NG NACELLE**

► p. 3

Detector with wireless sensors **SKY RADIO 3**

► p. 4

Product range summary

► p. 5

[www.made-sa.com](http://www.made-sa.com)



Follow us :





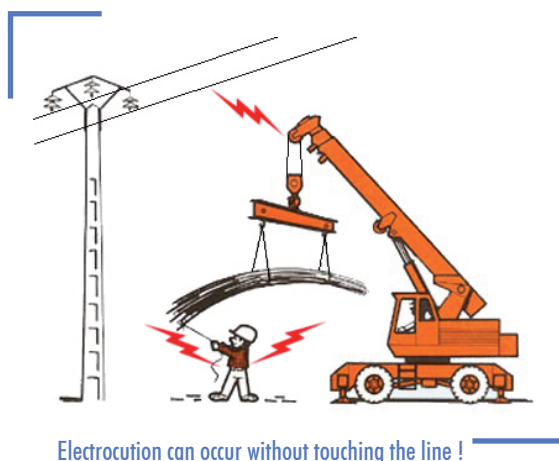
## Overhead lines detection

**The overhead MV and HV lines are each year a source of work accidents...**

### SIX GOOD REASONS TO USE OUR DETECTORS

- Because overhead lines are of long standing, field operators no longer notice them.
- Because the height of mechanical excavators, cradles, tractors continue to increase, the number of electrocution accidents is growing each year.
- Because each day the operators take lot of risks at work near electrical overhead lines.
- Protect your people and vehicles.
- Experience of 20 years in the cement market, aerial bucket market ...
- 60 % of the concrete pump trucks use MADE systems in France.
- Customer references : Inter Service Pompe, Holcim, Theam, Orange, and fire brigade.

### REMINDER



Electrocution can occur without touching the line !

### OUR SOLUTIONS

Detect Line NG, SKY NG NACELLE and SKY RADIO 3 are overhead electric detectors for the prevention of electrical accidents. They are intended for any type of vehicle likely to accidentally come into contact with a high voltage electrical line. When the moving part of a work at height vehicle approaches the line, the device detects the presence of the line and triggers an audible and visual alarm while blocking the movement of the moving part (optional). The blocking and alarms can be deactivated once the line has been located and under the responsibility of the operator.

The sensitivity of the device is calibrated by default for the detection of 20 kV medium voltage lines, but can be adapted for higher voltages.

### MEAN OF PREVENTION

Our solution, by detecting the proximity of overhead lines, is a means of preventing accidents but does not exempt operators from following the safety rules in force.



SCAN ME  
for more  
information





# Detector with wire sensors

## DETECT LINE NG - SKY NG NACELLE

Detect line is a prevention system with a single antenna fixed on the roof of a vehicle. it warns of the presence of overhead power lines around the vehicle to be protected.

### APPLICATION

- ♦ Concrete pump
- ♦ Conveyor belt
- ♦ Auxiliary cranes
- ♦ Hydraulic excavators
- ♦ Aerial bucket
- ♦ Food tanker
- ♦ Agricultural machinery
- ♦ Fire-fighting vehicles

### OPERATION

DETECT LINE NG senses the electric field around a high voltage power line.

DETECT LINE NG alerts the user with an audible signal and a warning light when the vehicle enters a danger area (20 to 30 meters configurable distance from a high voltage power line).

After the system has detected an electric line, it can be acknowledged on the central unit, using one of the two control monitors, and set in "vigilance" mode.

A sound alert will then be emitted at regular intervals to indicate the danger. This mode will maintain the operator's vigilance as long as the vehicle stays in the danger area.

- ♦ Self-test system at each power-on
- ♦ Sensitivity limits of the system do not allow the detection of 230 V - 380 V line
- ♦ The system does not detect the presence of DC voltage



SCAN ME  
for more  
information



# Detector with wireless sensors

## SKY RADIO3

SKY RADIO 3 is a prevention system which operates according to a principle of proximity detection based on several sensors, depending on the number of arms of the crane/aerial bucket/machine to be equipped.

It warns the operator by an audible signal and a visual alarm when the moving parts of work at height of the vehicle are approaching the risk zone.

The detection distance can be configured between 3 and 6 meters (10 to 17 feet) from the high voltage line.

### APPLICATION

- ♦ Concrete pump
- ♦ Aerial Bucket
- ♦ Conveyor belt
- ♦ Food tanker
- ♦ Auxiliary cranes
- ♦ Agricultural machinery
- ♦ Hydraulic excavators
- ♦ Fire-fighting vehicles

### OPERATION

SKY RADIO 3 is activated when the Power Take-Off of the vehicle (PTO) is engaged.

When the device detects the presence of the line, it triggers an audible and visual alarm while blocking the movement of the moving part at risk (optional). The blocking and alarms can be remotely deactivated under the responsibility of the operator, from the cabin control monitor or the external control monitor.

Acknowledgment by the operator deactivates the blocking of movement and the audible alarm for a configurable time, before returning to nominal operation. However the visual alarm remains active as long as a danger is present.

- ♦ Self-test system at each power-on
- ♦ Sensitivity limits of the system do not allow the detection of 230 V - 380 V line
- ♦ The system does not detect the presence of DC voltage



SCAN ME  
for more  
information



## Product range summary

Products	Volumetric detection from 20 to 40 m configurable		Proximity detection from 3 to 6 m configurable			
	DETECT LINE with outside control monitor	DETECT LINE with cabin control monitor	SKY RADIO 3 (Wireless) with outside control monitor	SKY RADIO 3 (Wireless) with cabin control monitor	SKY NG NACELLE	SKY NG NACELLE RADIO (Wireless)
Conveyor belt	√ 1 sensor		√ 4 sensors			
Concrete Pump 3 arms	√ 1 sensor		√ 5 sensors			
Concrete Pump 4 arms	√ 1 sensor		√ 7 sensors			
Concrete Pump 5 arms	√ 1 sensor		√ 9 sensors			
Basket ≤ 16m					√ 4 sensors	
Basket from 16 to 22m						√ 4 sensors
Basket from 22 to 30m						√ 6 sensors
Auxiliary cranes ≤ 16m	√ 1 sensor		√ 2 sensors			
Auxiliary cranes from 16 to 22m			√ 4 sensors			
Auxiliary cranes from 22 to 30m			√ 6 sensors			
Hydraulic excavators		√ 1 sensor		√ 2 sensors		
Food tanker		√ 1 sensor		√ 1 sensors		
Agricultural machinery		√ 1 sensor				
Fire-Fighting vehicles		√ 2 sensors			√ 4 sensors	



SCAN ME  
for more  
information





**MADE**

POWER LINE DETECTOR Specific telecom equipment  
DEFENCE ELECTRICITY DISTRIBUTION MAINTENANCE

**UNDERGROUND NETWORK LOCATOR**

electricity distribution maintenance DEFENCE power  
line detector PERSONAL PROTECTIVE EQUIPEMENT under-  
ground network locator specific telecom equip-  
ment **ELECTRICITY DISTRIBUTION MAIN-**

**TENANCE** POWER LINE DETECTOR Specific telecom  
equipment DEFENCE UNDERGROUND NETWORK LOCATOR elec-

tricity distribution maintenance power line detector  
**SPECIFIC TELECOM EQUIPMENT** PERSONAL

PROTECTIVE EQUIPEMENT underground network locator  
ELECTRICITY DISTRIBUTION MAINTENANCE **POWER LINE**

**DETECTOR** SPECIFIC TELECOM EQUIPMENT DE-  
FENCE power line detector UNDERGROUND NETWORK

EQUIPMENT power line detector **PERSONAL**  
**PROTECTIVE EQUIPMENT** electricity distri-

bution maintenance specific telecom equip-  
ment **DEFENCE** power line detector PERSONAL PRO-

TECTIVE EQUIPMENT underground network locator DEFENCE

**MADE**

